



RESISTANCE WELDING PRODUCTS

- ELECTRODES • HOLDERS • BAR STOCK • SEAM WELDING WHEELS • RINGS
- SPECIAL DIES • SHAFTS • BUSHINGS • CASTINGS
- FORGINGS • ELECTRODE MATERIALS

**Special electrodes, holders and dies for
resistance welding applications**

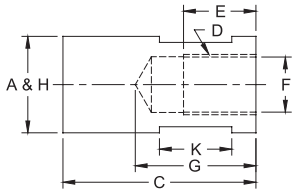
Continuously serving the resistance Welding Industry since 1929, CMW Inc. is an industry leader in the development, engineering and manufacturing of a variety of products. In addition, CMW offers a diversity of special metals for resistance welding applications. CMW's resistance welding products are engineered to provide the most effective materials commercially available to help achieve top quality welds. Experienced CMW engineers will aid you in the design and production of standard or special parts for your application to insure maximum efficiency from CMW's resistance welding products.

**CMW Inc.
70 S. Gray Street
Indianapolis, IN 46201**

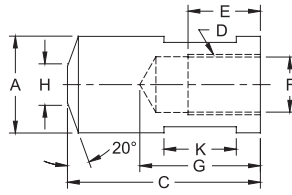
**Phone: 866-634-8884
Fax: 866-239-6995
Email: cmw@cmwinc.com
Website: www.cmwinc.com**

**CMW Inc.
P.O. Box 2266
Indianapolis, IN 46206**

THREADED ELECTRODES

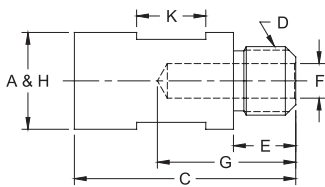


FEMALE FLAT

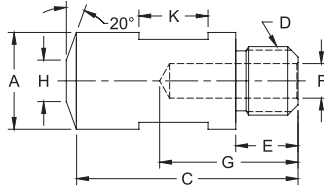


FEMALE TRUNCATED

CMW®3 FEMALE THREADED ELECTRODES										
CMW®3 PART No.	Type	O.A.L. C	Thread D	Major Dia. A	Thread Depth E	Water Hole Depth G	Water Hole Dia. F	Over Wrench Flats	Wrench Flat Length K	Welding Face Dia. H
336508	Female Flat	2	5/8-18	1	3/4	1-1/4	37/64	7/8	3/4	1
336510				1-1/4				3/4	1-1/4	
336512				1-1/2				7/8	1-1/2	
326508	Female Truncat.	2	5/8-18	1	3/4	1-1/4	37/64	7/8	3/4	3/8
326510				1-1/4				3/4	1/2	
326512				1-1/2				7/8	5/8	

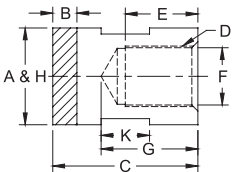


MALE FLAT

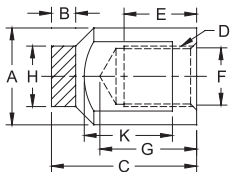


MALE TRUNCATED

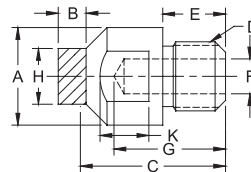
CMW®3 MALE THREADED ELECTRODES										
CMW®3 PART No.	Type	O.A.L. C	Thread D	Major Dia. A	Thread Depth E	Water Hole Depth G	Water Hole Dia. F	Over Wrench Flats	Wrench Flat Length K	Welding Face Dia. H
330507	Male Flat	2	5/8-18	7/8	9/16	1-1/4	5/16	3/4	5/8	7/8
330508			5/8-18	1	9/16		5/16	7/8	5/8	1
335506			5/8-11	3/4	15/32		5/16	5/8	1/2	3/4
335507			5/8-11	7/8	15/32		5/16	3/4	3/4	7/8
335508			3/4-10	1	5/8		3/8	7/8	7/8	1
335510	3/4-10	1-1/4	5/8	3/8	1	3/4	1-1/4			
335512	7/8-9	1-1/2	3/4	1/2	1-1/4	7/8	1-1/2			
325506	Male Truncat.	2	5/8-11	3/4	15/32	1-1/4	5/16	5/8	1/2	1/4
325507			5/8-11	7/8	15/32		5/16	3/4	5/8	5/16
325508			3/4-10	1	5/8		3/8	7/8	5/8	3/8
325510			3/4-10	1-1/4	5/8		3/8	1	3/4	1/2



ELKONITE® FACED FEMALE FLAT

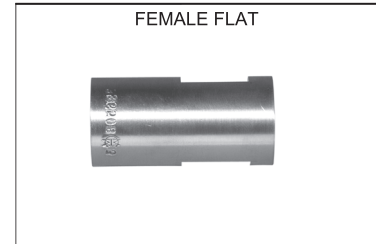


ELKONITE® FACED FEMALE CENTERED



ELKONITE® FACED MALE CENTERED

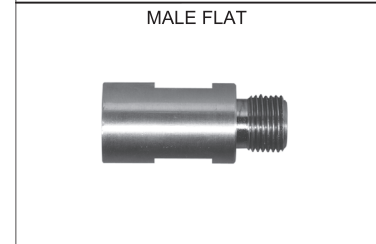
ELKONITE® FACED MALE & FEMALE THREADED ELECTRODES											
ELKONITE® 10W3 PART No.	Type	O.A.L. C	Thread D	Major Dia. A	Thread Depth E	Water Hole Depth G	Water Hole Dia. F	Over Wrench Flats	Wrench Flat Length K	Welding Face Dia. H	ELKONITE® Thickness B
636308	Female Flat	1-1/2	5/8-18	1	3/4	1	37/64	7/8	1/2	1	1/4
636310				1-1/4				1/2	1-1/4		
636312				1-1/2				7/8	1-1/2		
626308	Female Centered	1-1/2	5/8-18	1	3/4	1	37/64	7/8	13/16	5/8	1/4
626310				1-1/4				11/16	5/8		
620307	Male Centered	1-1/2	5/8-18	7/8	9/16	1	5/16	3/4	3/4	1/2	1/4
625206		1-1/4	5/8-11	3/4	15/32	7/8	5/16	5/8	3/4	1/2	3/16
625308		1-5/8	3/4-10	1	5/8	1-3/16	3/8	7/8	7/8	5/8	1/4



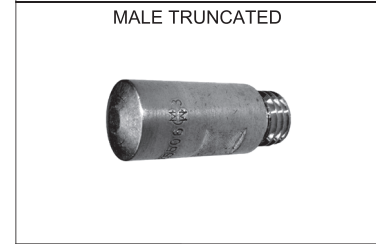
FEMALE FLAT



FEMALE TRUNCATED



MALE FLAT



MALE TRUNCATED



ELKONITE® FACED FEMALE FLAT



ELKONITE® FACED FEMALE CENTERED



ELKONITE® FACED MALE CENTERED