



RESISTANCE WELDING PRODUCTS

- ELECTRODES • HOLDERS • BAR STOCK • SEAM WELDING WHEELS • RINGS
- SPECIAL DIES • SHAFTS • BUSHINGS • CASTINGS
- FORGINGS • ELECTRODE MATERIALS

**Special electrodes, holders and dies for
resistance welding applications**

Continuously serving the resistance Welding Industry since 1929, CMW Inc. is an industry leader in the development, engineering and manufacturing of a variety of products. In addition, CMW offers a diversity of special metals for resistance welding applications. CMW's resistance welding products are engineered to provide the most effective materials commercially available to help achieve top quality welds. Experienced CMW engineers will aid you in the design and production of standard or special parts for your application to insure maximum efficiency from CMW's resistance welding products.

**CMW Inc.
70 S. Gray Street
Indianapolis, IN 46201**

**Phone: 866-634-8884
Fax: 866-239-6995
Email: cmw@cmwinc.com
Website: www.cmwinc.com**

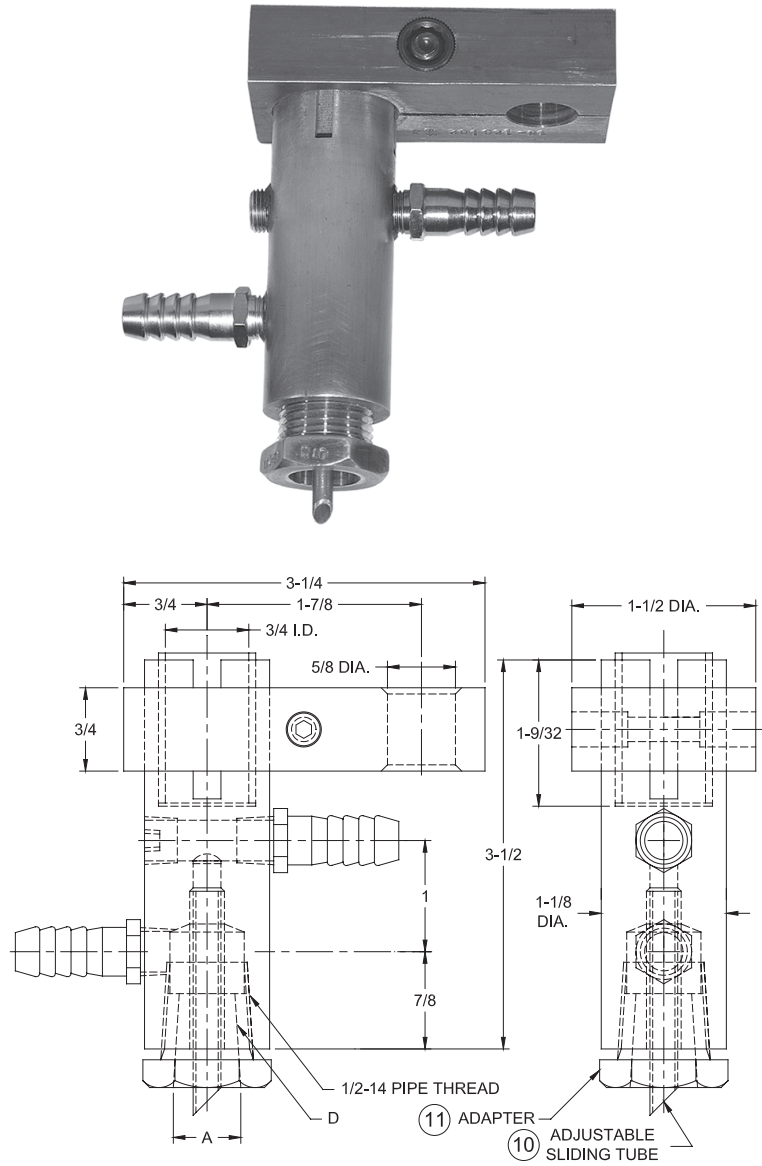
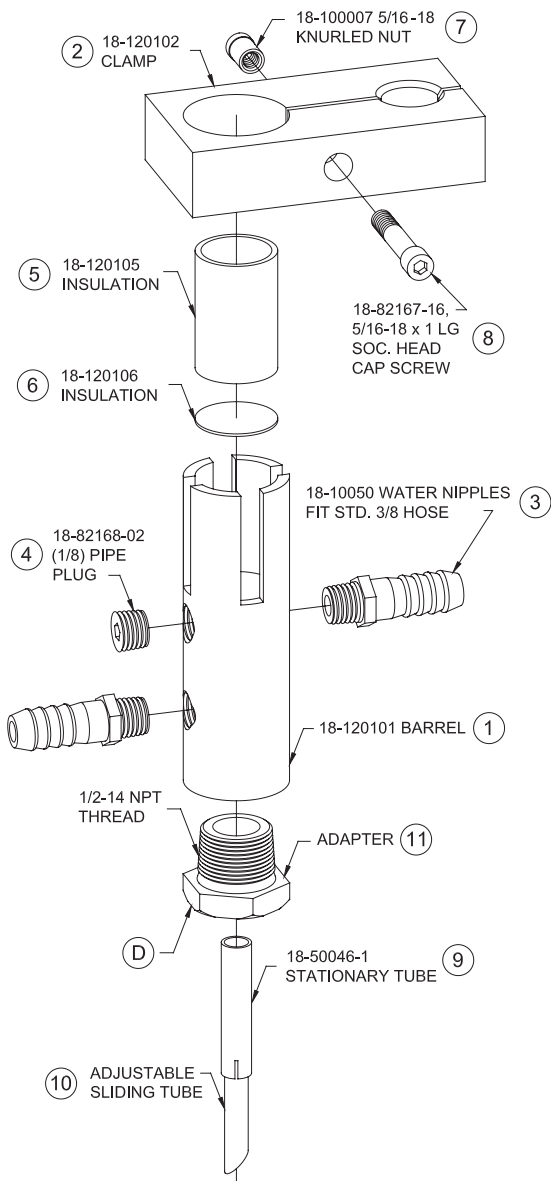
**CMW Inc.
P.O. Box 2266
Indianapolis, IN 46206**

MULTI-SPOT WELDER ELECTRODE ADAPTERS

CMW electrode adapters for multispot air or hydraulic pistons are supplied with 3/4 diameter straight piston rod ends. These adapters are equipped with means for attaching the welding cable from the transformer and the water hoses to the inlet and outlet water connections.

These adapters are available in four basic assemblies as shown in the table.

MULTI-SPOT WELDER ELECTRODE ADAPTER REPLACEMENT PARTS



Part No. Assembly	Major Tape Dia. A	Attachment Type D	Adjustable Sliding tube 10	Adapter Part No. 11*
18-1201	--	1/2-14 NPT	18-10046-23	--
18-1202	.414	5 RW Male cap	--	18-7465-07
18-1203	.463	4 RW	18-10046-23	18-746-07
18-1204	.625	5 RW	18-10046-23	18-747-07

All assemblies include items 1, 2, 3, 4, 5, 6, 7, 8, and 9.

* See page 31 for adapter details.

WELDING MACHINE CONTROL CONTACTORS

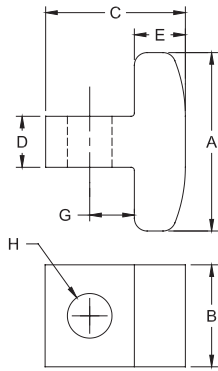
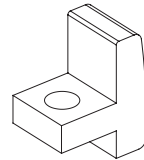
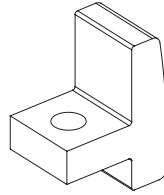
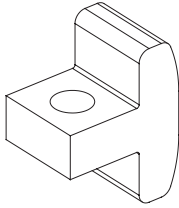


Phone: 866-634-8884

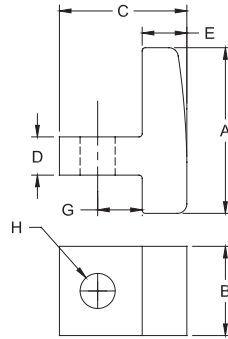
Fax: 866-239-6995

Email: cmw@cmwinc.com

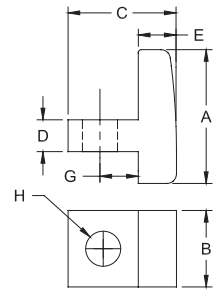
WELDING MACHINE CONTROL CONTACTORS



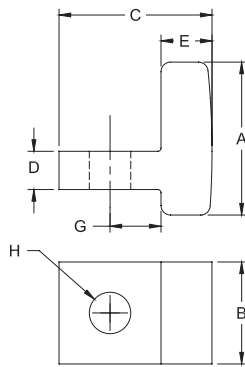
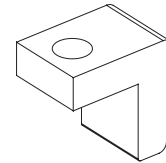
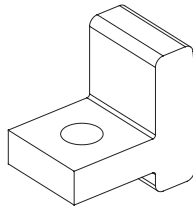
16-1303
CMW[®]353



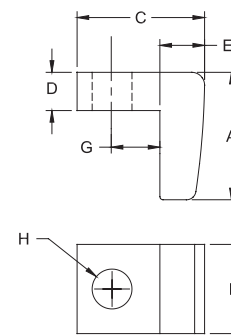
16-1304
CMW[®]353



16-1306
CMW[®]353



16-1307
CMW[®]353



16-1309
CMW[®]353

For use primarily in resistance welding controls CMW maintains standard stocks of five contacts listed. They consist of CMW[®]353 material, a predominately copper alloy possessing arc resisting properties.

CMW[®]353 material has the ability to interrupt the current in a short time with minimum arc hangover. Because of the arc resistant characteristics of the metal, only the desired number of cycles of current are transmitted to the welding machine. Uniform welding quality is obtained because no additional current passes through the control, since CMW[®]353 material tends to prevent the arc from restriking.

Contactor Part No.	Overall Length A	Width B	Height C	D	E	G	Hole Dia. H
16-1303	1-3/4	1	1-3/8	1/2	1/2	7/16	7/16
16-1304	1-5/8	7/8	1-1/4	3/8	7/16	7/16	11/32
16-1306	1-5/16	3/4	1-1/16	5/16	3/8	3/8	11/32
16-1307	1-1/2	1	1-1/2	3/8	1/2	1/2	11/32
16-1309	1-1/4	7/8	1-1/4	3/8	7/16	15/32	25/64

EXAMPLE: 16-1303

