



RESISTANCE WELDING PRODUCTS

- ELECTRODES • HOLDERS • BAR STOCK • SEAM WELDING WHEELS • RINGS
- SPECIAL DIES • SHAFTS • BUSHINGS • CASTINGS
- FORGINGS • ELECTRODE MATERIALS

**Special electrodes, holders and dies for
resistance welding applications**

Continuously serving the resistance Welding Industry since 1929, CMW Inc. is an industry leader in the development, engineering and manufacturing of a variety of products. In addition, CMW offers a diversity of special metals for resistance welding applications. CMW's resistance welding products are engineered to provide the most effective materials commercially available to help achieve top quality welds. Experienced CMW engineers will aid you in the design and production of standard or special parts for your application to insure maximum efficiency from CMW's resistance welding products.

**CMW Inc.
70 S. Gray Street
Indianapolis, IN 46201**

**Phone: 866-634-8884
Fax: 866-239-6995
Email: cmw@cmwinc.com
Website: www.cmwinc.com**

**CMW Inc.
P.O. Box 2266
Indianapolis, IN 46206**

CRANK ELECTRODES - COLD FORMED



Phone: 866-634-8884

Fax: 866-239-6995

Email: cmw@cmwinc.com

FEATURES AND SPECIFICATIONS

- Very strong bend electrodes for higher force applications

- Bent & Offset electrodes are for hard to reach locations

- Long lasting heavy duty electrodes

- Works with all industry standard holders

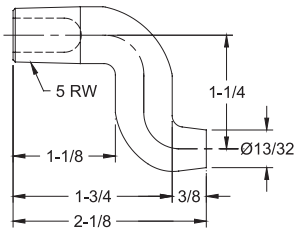
- Use with 4 & 5 R.W.M.A Holders

- Bent dimensions are for reference only

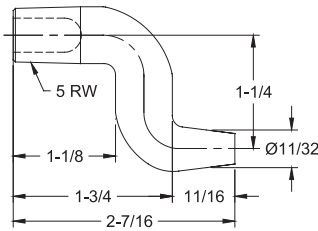
- Electrical conductivity up to 85% IACS for cold formed crank electrodes

- Rockwell hardness up to 83 HRB for cold formed crank electrodes

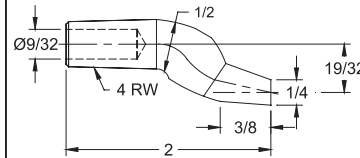
CRANK ELECTRODES - COLD FORMED



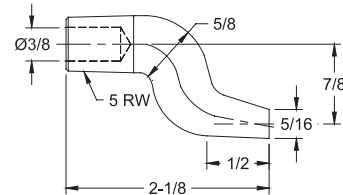
16-38661 CMW[®]3
COLD FORMED*



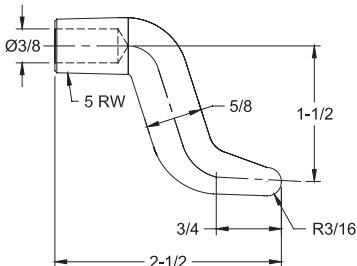
16-3866 CMW[®]3
COLD FORMED*



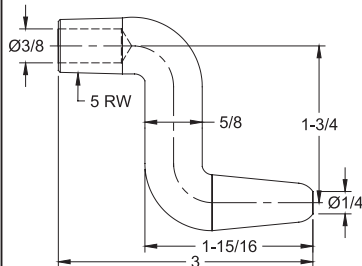
16-3870 CMW[®]3
COLD FORMED*



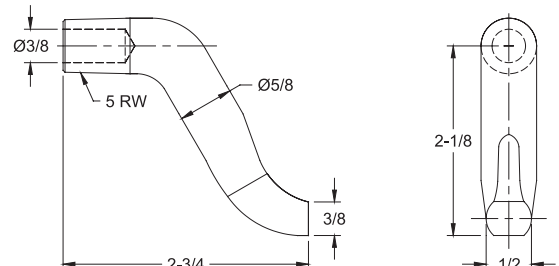
16-3871 CMW[®]3
COLD FORMED*



16-38351 CMW[®]3
COLD FORMED*



16-38352 CMW[®]3
COLD FORMED*



16-38353 CMW[®]3
COLD FORMED*

*Optional materials CMW[®]28 and CMW[®]100 available on special order

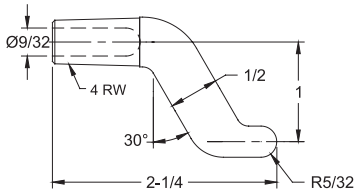
FEATURES AND SPECIFICATIONS

- Very strong bend electrodes for higher force applications
- Offset electrodes are for hard to reach locations
- Long lasting heavy duty electrodes

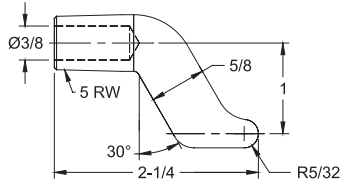
- Can be used in many job shop applications
- Works with all industry standard holders
- Use with 4 & 5 R.W.M.A Holders

- Electrical conductivity up to 80% IACS for castings & forged crank electrodes
- Rockwell hardness up to 70 HRB for castings & forged crank electrodes

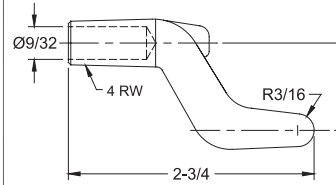
CRANK ELECTRODES - CASTING, FORGED



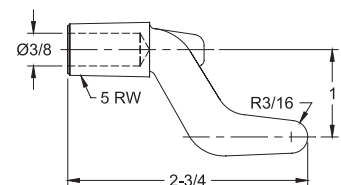
16-3835 CMW[®]3
CASTING



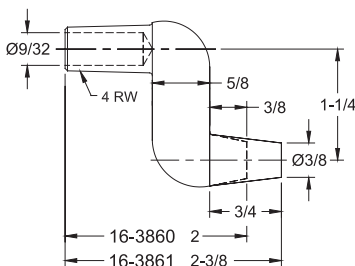
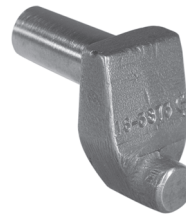
16-3836 CMW[®]3
CASTING



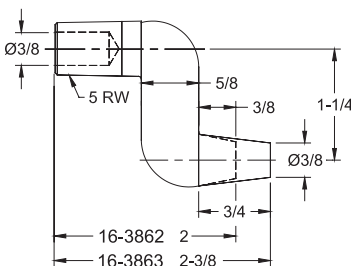
16-3837 CMW[®]3
CASTING



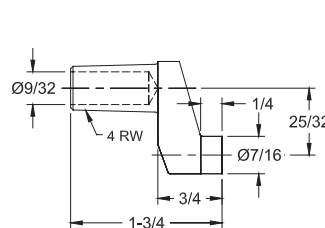
16-3838 CMW[®]3
CASTING



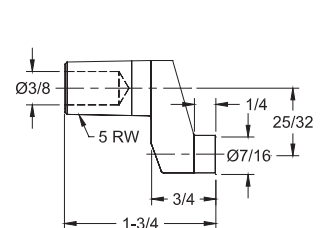
CMW[®]3
FORGED



CMW[®]3
FORGED



16-3873 CMW[®]3
CASTING



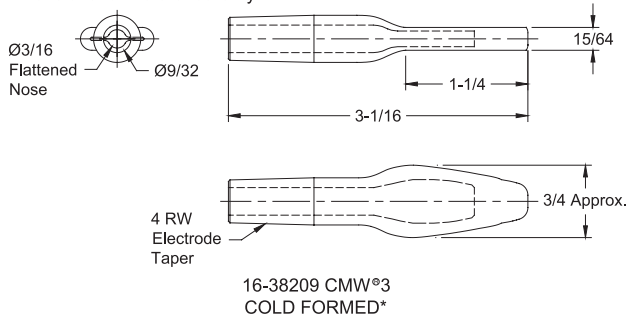
16-3874 CMW[®]3
CASTING

SPADE ELECTRODES

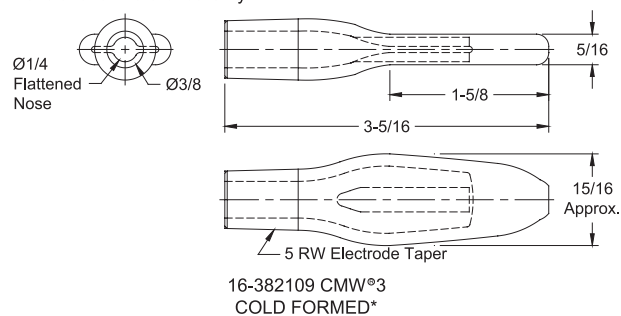
- See page 6 for
Metric Conversions
- See page 7 for
Taper Dimensions



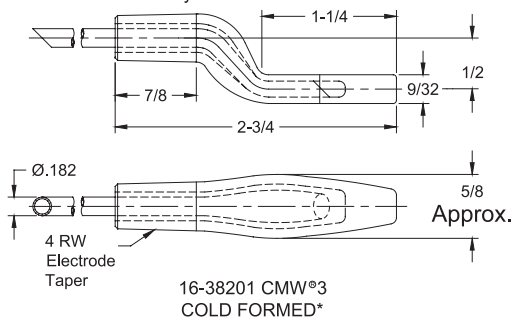
Bent Dimensions for Reference Only



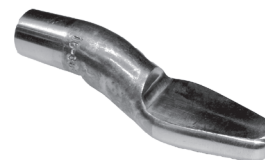
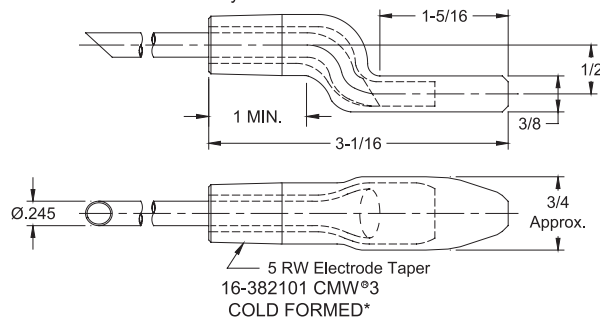
Bent Dimensions for Reference Only



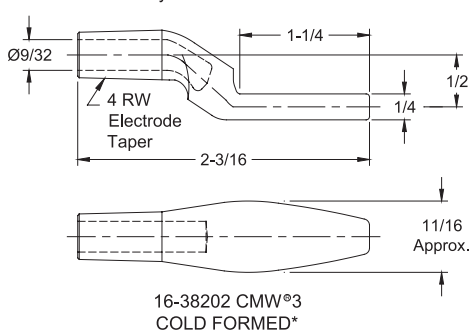
Bent Dimensions for Reference Only



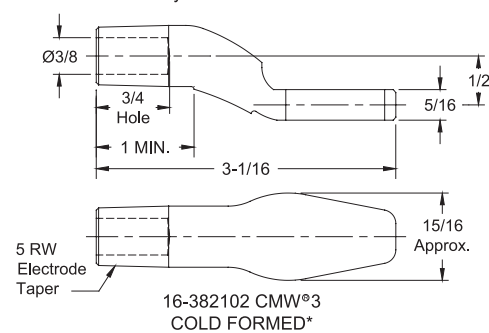
Bent Dimensions for Reference Only



Bent Dimensions for Reference Only

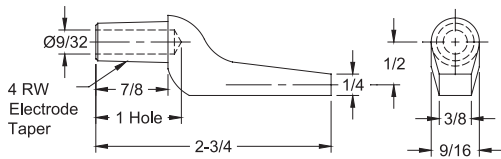


Bent Dimensions for Reference Only

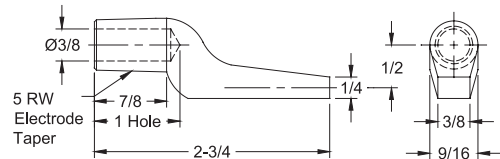


*Optional material available on special order: CMW[®]28 & CMW[®]100

GUN ELECTRODES



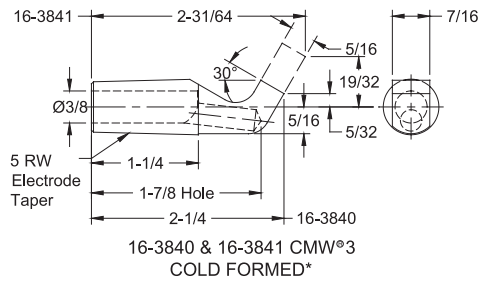
16-3820 CMW[®]3
CASTING



16-3821 CMW[®]3
CASTING

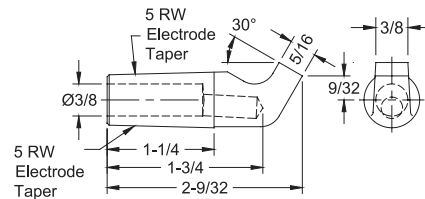


Bent Dimensions for Reference Only



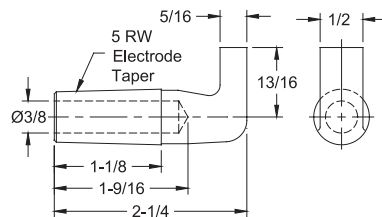
16-3840 & 16-3841 CMW[®]3
COLD FORMED*

Bent Dimensions for Reference Only



16-3847 CMW[®]3
COLD FORMED*

*Optional material CMW[®]28 & CMW[®]100 available on special order.



16-382120 CMW[®]3
CASTING

- See page 6 for
Metric Conversions
- See page 7 for
Taper Dimensions