



RESISTANCE WELDING PRODUCTS

- ELECTRODES • HOLDERS • BAR STOCK • SEAM WELDING WHEELS • RINGS
- SPECIAL DIES • SHAFTS • BUSHINGS • CASTINGS
- FORGINGS • ELECTRODE MATERIALS

**Special electrodes, holders and dies for
resistance welding applications**

Continuously serving the resistance Welding Industry since 1929, CMW Inc. is an industry leader in the development, engineering and manufacturing of a variety of products. In addition, CMW offers a diversity of special metals for resistance welding applications. CMW's resistance welding products are engineered to provide the most effective materials commercially available to help achieve top quality welds. Experienced CMW engineers will aid you in the design and production of standard or special parts for your application to insure maximum efficiency from CMW's resistance welding products.

**CMW Inc.
70 S. Gray Street
Indianapolis, IN 46201**

**Phone: 866-634-8884
Fax: 866-239-6995
Email: cmw@cmwinc.com
Website: www.cmwinc.com**

**CMW Inc.
P.O. Box 2266
Indianapolis, IN 46206**

BACK-UP ELECTRODES



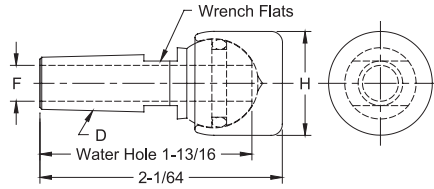
Phone: 866-634-8884

Fax: 866-239-6995

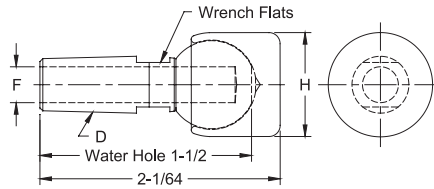
Email: cmw@cmwinc.com

SWIVEL HEAD BACK-UP ELECTRODES

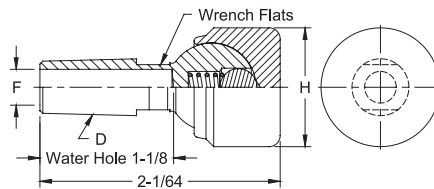
| PART No. | Taper D | Water Hole Dia. F | Face Dia. H | Type |
|----------|---------|-------------------|-------------|-------------------------|
| 16-2304 | 4 RW | 9/32 | 7/8 | Thru hole with "O" ring |
| 16-2305 | 5 RW | 3/8 | | |
| 16-2302 | 4 RW | 9/32 | 1 | |
| 16-2303 | 5 RW | 3/8 | | |
| 16-2300 | 4 RW | 9/32 | 1-1/4 | |
| 16-2301 | 5 RW | 3/8 | | |
| 16-2306 | 5 RW | 3/8 | 1-1/2 | |



| PART No. | Taper D | Water Hole Dia. F | Face Dia. H | Type |
|----------|---------|-------------------|-------------|------------|
| 16-2314 | 4 RW | 9/32 | 7/8 | Blind hole |
| 16-2315 | 5 RW | 3/8 | | |
| 16-2312 | 4 RW | 9/32 | 1 | |
| 16-2313 | 5 RW | 3/8 | | |
| 16-2310 | 4 RW | 9/32 | 1-1/4 | |
| 16-2311 | 5 RW | 3/8 | | |
| 16-2316 | 5 RW | 3/8 | 1-1/2 | |



| PART No. | Taper D | Water Hole Dia. F | Face Dia. H | Type |
|----------|---------|-------------------|-------------|---------------------------------|
| 16-23129 | 4 RW | 9/32 | 1 | Blind hole with spring and ball |
| 16-23139 | 5 RW | 3/8 | | |
| 16-23109 | 4 RW | 9/32 | 1-1/4 | |
| 16-23119 | 5 RW | 3/8 | | |
| 16-23169 | 4 RW | 9/32 | 1-1/2 | |
| 16-23179 | 5 RW | 3/8 | | |

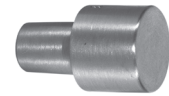
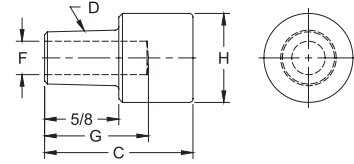


Standard material: Shank - CMW®3
Cap - CMW®3
Optional material available on special order:
Cap-CMW®100, ELKONITE® & ELKON® facing

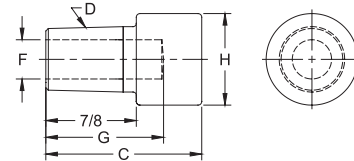


LARGE DIAMETER FLAT FACED BACK-UP ELECTRODES

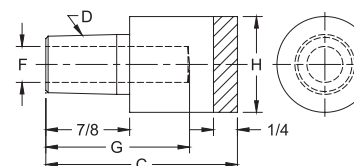
| PART No. | Weld Face Material | O.A.L. C | Taper D | Water Hole | | Weld Face Dia. H |
|----------|--------------------|----------|---------|------------|---------|------------------|
| | | | | Dia. F | Depth G | |
| 16-3012 | CMW®3 | 1-1/4 | 4 RW | 9/32 | 7/8 | 3/4 |
| 16-3010 | | | | | | 1 |
| 16-3030 | | | | | | 1-1/4 |



| PART No. | Weld Face Material | O.A.L. C | Taper D | Water Hole | | Weld Face Dia. H |
|----------|--------------------|----------|---------|------------|---------|------------------|
| | | | | Dia. F | Depth G | |
| 16-3021 | CMW®3 | 1-1/2 | 5 RW | 3/8 | 1-1/8 | 7/8 |
| 16-3020 | | | | | | 1 |
| 16-3040 | | | | | | 1-1/4 |
| 16-3050 | | | | | | 1-1/2 |

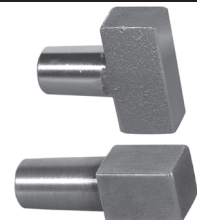
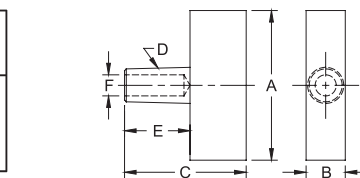


| PART No. | Weld Face Material | O.A.L. C | Taper D | Water Hole | | Weld Face Dia. H |
|----------|--------------------|----------|---------|------------|---------|------------------|
| | | | | Dia. F | Depth G | |
| 16-1392 | ELKONITE® 10W3 | 2 | 5 RW | 3/8 | 1-1/2 | 1 |
| 16-1393 | | | | | | 5/8 |
| 16-1394 | | | | | | 1-1/2 |
| 16-1395 | | | | | | 1-1/4 |
| 16-1395 | | | | | | 5/8 |

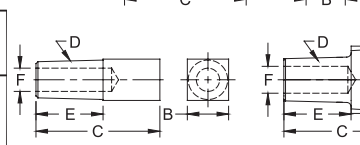


SQUARE & RECTANGULAR FACED BACK-UP ELECTRODES

| PART No. | Weld Face Material | O.A.L. C | Taper D | Shank Length E | Water Hole Dia. F | Weld Face Lgth. A | Weld Face Width B |
|-----------|--------------------|----------|---------|----------------|-------------------|-------------------|-------------------|
| 16-382158 | CMW®3 Casting | 1-5/8 | 4 RW | 7/8 | 9/32 | 1-1/2 | 1/2 |
| 16-3111 | | | 4 RW | | 9/32 | 2 | 5/8 |
| 16-382160 | | | 5 RW | | 3/8 | 1-1/2 | 1/2 |
| 16-3121 | | | 5 RW | | 3/8 | 2 | 5/8 |



| PART No. | Weld Face Material | O.A.L. C | Taper D | Shank Length E | Water Hole Dia. F | Weld Face Lgth. A | Weld Face Width B |
|-----------|--------------------|----------|---------|----------------|-------------------|-------------------|-------------------|
| 16-3110 | CMW®3 | 1-1/2 | 4 RW | 13/16 | 9/32 | 1/2 | 1/2 |
| 16-3120 | Cold Formed | 1-3/4 | 5 RW | 7/8 | 3/8 | 5/8 | 5/8 |
| 16-384110 | Formed | 1-5/8 | 5 RW | 7/8 | 3/8 | 15/16 | 1/2 |



Other tapers and alloys available to special order